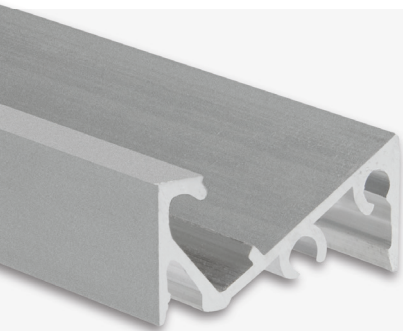


NEU **FURNIT6 S**
LED Aufbauprofil

■ SILBER □ WEISS RAL 9003 ■ SCHWARZ RAL 9005



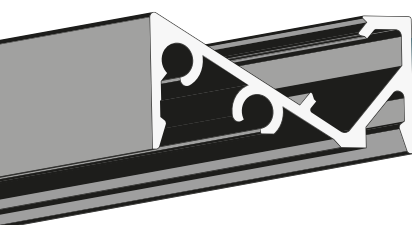
max.
6 mm



MASS-KONFEKTION & OEM-FERTIGUNG AUF ANFRAGE

Bis 6 m | RAL-Farben

Kühlmasse: 153 g/m | Das FURNIT6 S ist ein Aufbauprofil, welches zum Anbringen an Möbelstücken gedacht/geeignet ist. Dieses Alu-Profil ist zusätzlich in weiss und schwarz verfügbar und kann mit einer flachen Abdeckung in opal/satiniert (65 %) ausgestattet werden.



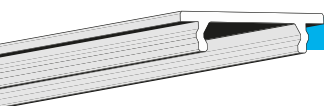
PROFIL

200 CM

PROFIL

- 2 m 114814
- 2 m 114816
- 2 m 114815

■ MONTAGEKLAMMER 114848



COVER 24

65 %

ABDECKUNGEN & ENDKAPPEN

COVER 24

65 % | opal/satiniert

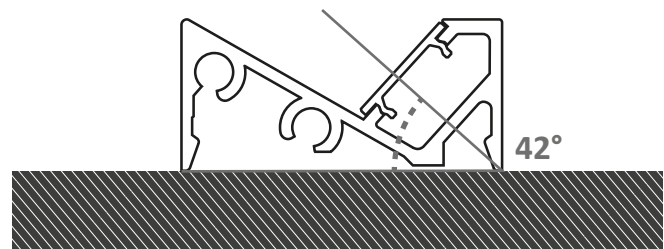
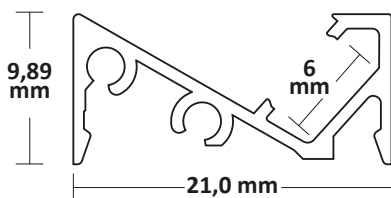
- 2 m 113648
- 6 m 113649

ENDKAPPEN

Aluminium

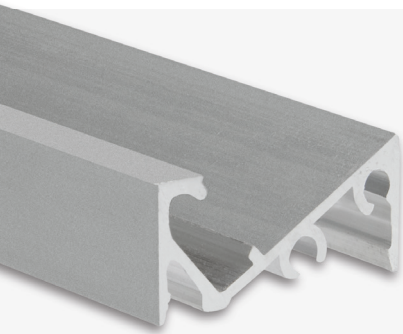
- EC95 114843
- EC95W 114845
- EC95B 114844

BEREITS AB NOVEMBER 2020 ERHÄLTlich!



NEW **FURNIT6 S**
LED Surface mount profile

■ SILVER □ WHITE RAL 9003 ■ BLACK RAL 9005



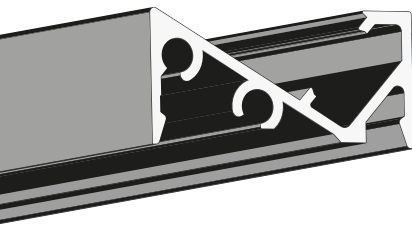
max.
6 mm



MADE-TO-MEASURE CONFECTIONERY & OEM PRODUCTION ON REQUEST

up to 6 m | RAL colours

Cooling mass: 153 g/m | The Furnit6 S is a mounting profile which is roofed/suitable for mounting on furniture. This aluminium profile is also available in white and black and can be fitted with a flat cover in opal/satinised (65%).



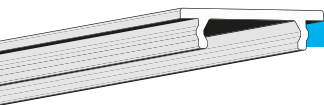
PROFILE

200 CM

PROFILE

- 2 m 114814
- 2 m 114816
- 2 m 114815

INSTALLATION CLIP 114848



COVER 24

65 %

COVERS & END CAPS

COVER 24

65 % | opal/satinised

- 2 m 113648
- 6 m 113649

END CAPS

Aluminium

- **EC95** 114843
- **EC95W** 114845
- **EC95B** 114844

**ALREADY
AVAILABLE FROM
NOVEMBER 2020!**

